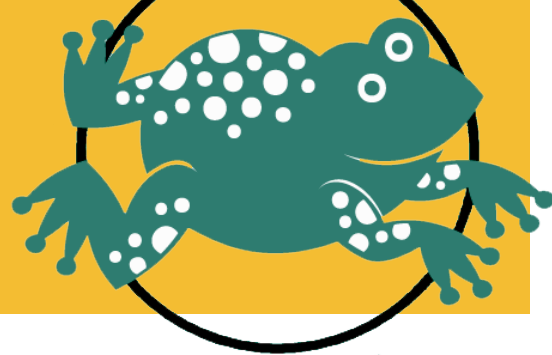


Penny Creek Frog News

PENNY CREEK ELEMENTARY SCHOOL NEWSLETTER



March 2022

VOLUME 5, ISSUE 7

From the Principal

Dear Penny Creek Families:

We have several important items occurring this month. First, Kindergarten Enrollment Kickoff for the 2022-23 school year begins March 7. If your child will be five years old by August 31, 2022, you can learn more about enrolling into kindergarten by attending a virtual webinar on March 3 from 6:00 – 7:00 p.m. See information below for important details.

Spring conferences are held Monday, March 28 through Friday, April 1. During this week, students will be dismissed at 1:00 p.m. to allow time for conferences in the afternoons. We hold evening conferences on Thursday, March 31 from 5:00 to 7:00 p.m. Your child's teacher will be setting your conference date and time within the next few weeks.

Conferences are a good time to discuss not only academic progress, but also social emotional growth. Teachers understand you will have questions and things you are wondering about. I encourage you to write down key questions, or points you would like to discuss, ahead of time, to have them addressed. Following are some topics which are commonly discussed at parent-teacher conferences.

- Questions about your child's progress.
- What are my child's strengths and areas for growth?
- How does my child get along with classmates?
- Things you can share with teacher about your child and life outside of school.
- Is my child working up to their ability? Where could they use improvement?
- What can we do at home to support what you are doing in the classroom?
- Any questions about the school's programs or policies.

Know that teachers look forward to meeting with you and learning from you as well. As always, if I can be of assistance, let me know.

Kindly,

A handwritten signature in cursive that reads "Marti Shefeland".

Marti Shefeland
Principal

Marti Shefeland
Principal

Stephanie Kirkpatrick
Assistant Principal

Penny Creek Elementary School
4117 132nd St. SE,
Everett, WA 98208
www.everettsd.org/pennycreek
425-385-7200

[**2021-22 School Calendar**](#)

[**Parents Overview Page**](#)

[**Student Handbook**](#)

March 4, 11, 18

Learning Improvement Friday
Student Dismissed at 2:15 p.m.

March 16

PTA MOD Pizza Dine Out

March 21

PTA Skate Night at 6:30 – 8:30 p.m.
Everett Skate Deck

March 25

ES for Parent Conferences Prep
Early Release Dismissal at 1:00 p.m.

March 28 – April 1

ES Parent Conferences
Early Release Dismissal at 1:00 p.m.

April 4 – April 8

NO School – Spring Break



Thank you voters



Thank you to everyone who took the time to vote, and all those who volunteered to sign wave and share the importance of the levies.

The Education Levy is the second largest revenue source for the Everett School District, making up about 14% of the budgeted general fund. The renewal of the levy provides funding for the next four years.

The Capital Levy provides funding for six years and makes up over 95% of the district's capital fund. As a reminder, the district website has a [list of projects](#) that are able to be funded thanks to the capital levy.

Kindergarten Kick Off!

If your child will be five years old by August 31, 2022, you can learn more about enrolling into kindergarten in a virtual webinar on March 3 from 6-7 p.m.

[Click for Zoom link](#). Passcode: school

Spanish, Vietnamese, Arabic, Russian interpreters are available.



Kindergarten registration begins this month



Do you have a child who will be 5 years old by Aug. 31, 2022? Registration begins on March 7, 2022. You can complete enrollment forms for kindergarten [online](#)! A [step-by-step parent walkthrough video](#) is also available as a resource.

Dual-language Spanish Immersion Program

The dual-language Spanish immersion program at Emerson Elementary School is an option for fall 2022. Families with children entering kindergarten will have the option to choose the dual language strand. This program gives elementary students an opportunity to complete the Everett Public Schools curriculum in a nontraditional and exciting way by immersing them in Spanish language and culture from kindergarten through twelfth grade. Students in the program will become proficient in both Spanish and English while learning the same curriculum content as their peers outside the program.

Priority will be given to students within the Emerson Elementary School attendance area. If a high number of students apply, a lottery will be conducted to select students. If the class is not filled from those in the Emerson attendance area, an additional lottery from beyond the school attendance area will be conducted.



Annual School Stakeholder Survey



To guide the Everett Public Schools' continuous improvement process, each year schools survey students, families, and staff. This information helps us to understand our specific strengths and challenges that impact school quality.

The School Stakeholder Annual Survey is only one of many pieces of data analyzed by school leaders and staff. In addition to survey data, student achievement, attendance, discipline, and program data is evaluated to create School Improvement Plan goals.

Students in grades 3-12 will be taking this survey in class. Families will also be invited to take the survey which runs March 1 to April 1. More information about this survey will be coming home soon!

Penny Creek Attendance Corner

If your student is absent or tardy from school, please email the attendance office at pceattendance@everettsd.org to let us know the reason for the absence or tardy. There is also a direct link on our webpage at: <https://www.everettsd.org/pennycreek>

- Absences must be reported (by email or note) within 30 days after a student returns back to school, not including Holidays or weekends, in order to have the absence excused. Emails or notes turned in past the 30-day timeframe will be accepted; however, the absence is not excused and will be coded as such.
- Automated attendance calls will be sent out daily at 10 a.m. If your student will be absent or tardy you must notify the office before 9:15 a.m. If it is reported after this time you may receive the automated call.
- Please view the [Everett School District Attendance Procedure 3122P](#) for more information (including definitions of absences).
- Did you have a medical appointment for your child, or they were sick, and you brought them to the doctor? If so, make sure to ask for a medical note from the provider. Email the note to the attendance office so those absences can be coded as a medical note excused absence.



Checking out a Penny Creek student during the school day

Sometimes it is necessary for a parent/guardian to pick up a student before Penny Creek's dismissal time. To help us prepare, please send a note or email the school office at PennyCreek@everettsd.org in advance, letting us know the specific date, time and who will be picking up your child. Students who are dismissed during the school day, must be signed out from the school office by their parent/guardian (or adult designee) before leaving the school grounds. If an adult designee is coming to check out your child, a note or email to the school office at PennyCreek@everettsd.org must be submitted by the guardian to confirm. Students will be called from the classroom for dismissal once the parent/guardian (or adult designee) arrives at the office. For the safety and security of students, we will ask for photo identification.



Changes to a student's daily going home plan

Occasionally, you may need to change the plan of how your child is going home at the end of the school day. If this is the case for your family, **we ask that a guardian sends an email to the school office at PennyCreek@everettsd.org and the classroom teacher by 2:45 pm.** Please include the name of your student, their teacher, and the change of plan. Our office will then deliver this information to your student. This method of communication helps to support our staff with accurate dismissal information.

Message from our Librarian – Mrs. Woodrum

Library volunteers needed! If you have time to donate to the Penny Creek Library, please reach out to me through email at kwoodrum@everettsd.org Let me know what day(s) and times that you are available and what type of tasks interest you most.

Some of the tasks include:

- Checking in books (AM task between 9:00 and 9:45)
- Reshelving books (any time, any day)
- Helping with student checkout
 - greatest need is with the kindergarten groups, Monday (2:00-3:30) OR T-TH (2:00-2:45)
- Book Doctor - repairing damaged books
- Copy room tasks
- Preparing new books for circulation - barcoding, AR levels, school stamp, cover protection, etc.
- General library upkeep - refreshing shelf signs, seasonal decor, etc.
- Be a guest reader - all grades enjoy a good story! 😊

If you are unavailable during the school day but want to support the library, I have occasional projects that can be done at home. One thing that ALL families can do to support our school library is find a consistent place at home for keeping library books and remind students when it is library day. Thanks for your support.

Education Support Professionals Week



March 14-18 help us recognize the important work education support staff does for schools and students every day. We encourage you to take a moment and say thank you to office staff, crossing guards, paraeducators, maintenance staff, food and nutrition services professionals, bus drivers and many other education support staff who help schools and the district function smoothly.

Daylight saving time begins March 13

Daylight Saving Time begins on Sunday, March 13 at 2 a.m. On Saturday night, set your clocks forward one hour (i.e., losing one hour) to “spring ahead.” There will be more light in the evening. Also called Spring Ahead, Summertime and Daylight-Saving Time.





Let's Connect



The March Let's Connect will focus on Family and Community Engagement. More information on the date and how to register will be coming soon.

Update emergency contacts

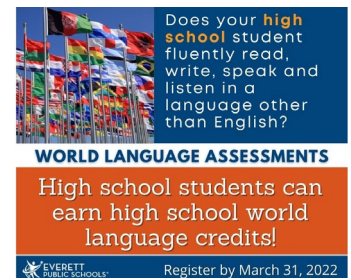
Please call your school if your phone number or emergency contact information changes at any time during the school year. This is the contact information used by the Everett Public Schools automated phone system in emergencies and to share important school information with families.



Spring World Language Assessment (WLA) – high school

The world language assessment for High School students on April 20. You can earn high school world language credits if you can fluently read, write, speak, and listen in a language other than English! Register to take the world language assessment by March 31. Visit our page for more information:

www.everettsd.org/wla



What is Lighthouse Cooperative?



Lighthouse Cooperative is a choice program within Everett Public Schools housed at Jefferson Elementary School. This K-5 program features standard district curriculum with an overlay of parent involvement via weekly classroom volunteering and support for enrichment activities such as field trips and parent-led specialty lessons. Classroom teachers and families work together weekly, building a strong community of students, families, and staff as children move through all six grades with the same classmates. Learn more [here](#).

Port Gardner Parent Partnership School (K-12)

Port Gardner is a parent partnership program, where parents/guardians are the primary educators of their children. The program is a blend of on-site classes taught by certificated teachers, and remote classes taught by parents/guardians in the home. On-site courses include both core academic areas and electives. High school level classes are credit-bearing and may be used towards earning a diploma through Everett Public Schools. Students enrolled in Port Gardner are public school students in an alternative public school program. For more about the program and enrollment information please visit: [Port Gardner Parent Partnership](#) or call 425-385-5150



Parent University – suggest a topic



Parent University is an on-demand resource created to help parents and guardians become full partners in their child’s education. Parent and family engagement in education positively impacts the academic and social success of children.

Our goal is to increase collaboration and involvement between schools, families, and the community; to educate, empower and connect families with resources that build parent and student confidence, enhance character development, and promote life skills to increase the likelihood of family success in academic endeavors.

Content includes a selection of pre-recorded videos and how-to documents that can be viewed at any time.

If you have additional topics you would like to suggest, please fill out our [“Suggest a Topic” form](#). The form is also available on our Parent University webpage at www.everettsd.org/ParentUniversity.

We value your partnership as we continually improve this resource for families.

Do not miss out!

Our school is using Peachjar to send flyers home electronically.



Just go to the home page of our school website and click on the Peachjar Eflyer button to check it out. You do not need to login to receive or view school eflyers.

No action is required on your part. You should have already received a welcome email from Peachjar that includes a username and password. This is provided so you can manage your account and flyer delivery preferences. Don’t worry if you’ve forgotten your password, you can reset it at any time. If you cannot locate your welcome email, you can [go to Peachjar and sign up!](#)

This system is used exclusively for the distribution of school-approved flyers. Your email address will not be shared or used for any other purpose.



3900 Broadway
Everett, WA 98201
425-385-4000
www.everettsd.org

• **Everett Public Schools does not discriminate in any programs or activities on the basis of sex, race, creed, religion, color, national origin, age, veteran or military status, sexual orientation, gender expression or identity, disability, or the use of a trained dog guide or service animal and provides equal access to the Boy Scouts and other designated youth groups. The following employees have been designated to handle questions and complaints of alleged discrimination:**

• **Title IX/Civil Rights Compliance Officer:**
• Kevin Allen
• 425-385-4100
• KAllen@everettsd.org
• PO Box 2098
• Everett, WA 98213

Section 504 Coordinator:
Dave Peters
425-385-4063
DPeters@everettsd.org
PO Box 2098
Everett, WA 98213

ADA Coordinator:
Randi Seaberg
425-385-4104
RSeaberg@everettsd.org
PO Box 2098
Everett, WA 98213



Below is the Spanish Version of District Newsletter Articles Content:

Gracias votantes



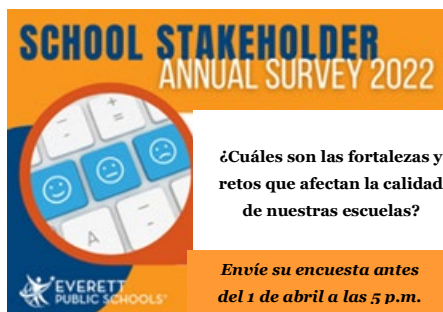
provee fondos para los próximos cuatro años.

La exacción capital provee fondos por seis años para el 95% del fondo capital del distrito. Como recordatorio, el sitio web del distrito tiene una [lista de proyectos](#) que van a ser posibles gracias al financiamiento proveído por esta exacción capital.

Gracias a todos por haberse dado el tiempo de ir a votar y a los que fueron voluntarios para promover con pancartas y compartir la importancia de estas exacciones.

La exacción educativa es la segunda fuente de ingreso más grande para las Escuelas Públicas de Everett, siendo el 14% del fondo general presupuestado. La renovación de esta exacción

Encuesta anual a estudiantes, padres y personal escolar (Annual School Stakeholder Survey)



Para guiar el proceso de mejora continua de las Escuelas Públicas de Everett, cada año las escuelas hacen una encuesta a los estudiantes, familias y personal escolar. Esta información nos ayuda entender nuestras fuerzas y retos en específico que afectan la calidad escolar.

La encuesta escolar anual a estudiantes, padres y personal escolar (en inglés como “School Stakeholder Annual Survey”) es solamente una de muchas de las piezas de datos analizadas por los líderes y personal escolar. Además de los datos de esta encuesta, se evalúa el aprovechamiento del estudiante, su asistencia, disciplina y datos del programa para crear las metas del plan de mejora escolar.

Los estudiantes del 3er al 12vo grado harán esta encuesta en su salón de clases. Las familias también serán invitadas a realizarlo a partir del 1 de marzo al 1 de abril. ¡Estaremos enviando más información sobre la encuesta próximamente!

¡¡ Iniciamos con Kínder !!

Si su hijo(a) tendrá 5 años cumplidos para el 31 de Agosto del 2022, usted puede aprender como registrarlo(a) para kínder, estaremos ofreciendo un seminario virtual el 3 de Marzo de 6 -7 p.m. Más información muy pronto, pero ¡APARTE LA FECHA ahora!



Inician las inscripciones al Kínder este mes



¿Tiene un hijo o hija que tendrá 5 años cumplidos para antes del 31 de agosto de 2022? Iniciaremos las inscripciones a partir del 7 de marzo de 2022. Puede llenar los formularios de inscripción para el Kínder [en línea](#)! Contamos con el recurso de un [video paso a paso para los padres de familia](#).



Programa de inmersión al español con lenguaje dual

El programa de inmersión al español con lenguaje dual (en inglés como “dual-language Spanish immersion program”) de la escuela primaria de Emerson es una opción disponible para el otoño 2022. Las familias con niños y niñas que van a ingresar al kínder tienen la opción de elegir seguir el programa con lenguaje dual. Este programa le da a los alumnos de primaria una oportunidad de poder completar el plan de estudios de Everett Public Schools de una manera excitante y no tradicional de poder estar inmersos en el idioma español y su cultura desde el kínder hasta el 12vo grado. Los alumnos en el programa tendrán dominio del idioma inglés y del español aprendiendo el mismo plan de estudios que sus compañeros que no están en este programa.

Se le da prioridad a los estudiantes que viven dentro de la zona de asistencia escolar de la escuela primaria Emerson. Si un número elevado de estudiantes aplica, se realizará un sorteo para seleccionar a los estudiantes. Si la clase no se llena con alumnos de la zona de asistencia escolar de Emerson, se hará un sorteo adicional para alumnos fuera de la zona de asistencia escolar.

Evaluación de idiomas del mundo en primavera (WLA)- Escuela Preparatoria (high school)

La evaluación de idiomas del mundo para los alumnos de preparatoria es el 20 de abril. ¡Puedes obtener créditos de idiomas de preparatoria si puedes leer, escribir, hablar y escuchar con fluidez un idioma diferente al inglés! Regístrate para hacer esta evaluación antes del 31 de marzo. Visita nuestra página para más informes: www.everettsd.org/wla

¿Su estudiante de preparatoria lee, escribe, habla y escucha un idioma diferente al inglés?

WORLD LANGUAGE ASSESSMENTS

¡Los alumnos de preparatoria pueden obtener créditos en idiomas!

EVERETT PUBLIC SCHOOLS Regístrate antes del 31 de marzo

¿Qué es el programa “Lighthouse Cooperative”?



Lighthouse Cooperative es un programa de elección (choice program) de las Escuelas Públicas de Everett establecido en la escuela primaria Jefferson. Este programa para alumnos del Kínder al 5to grado ofrece el plan estándar de estudios del distrito con el agregado de la participación de los padres a través de un voluntariado semanal y con su apoyo en actividades enriquecedoras como excursiones y lecciones de especialidades dirigidas por los padres. Las maestras de los salones de clases y las familias trabajan en conjunto semanalmente, formando una fuerte comunidad entre estudiantes, familias y personal escolar a través de los seis grados escolares en compañía de sus mismos compañeros de clase. Entérese más [aquí](#).

Escuela de Asociación de Padres de Port Gardner (K-12)

Port Gardner es un programa de asociación de padres, donde los padres/tutores son los principales educadores de sus hijos. El programa es una combinación de clases presenciales impartidas por maestros certificados y clases ocasionalmente impartidas por los padres/tutores en el hogar. Los cursos presenciales incluyen las dos áreas, clases académicas básicas y clases electivas. Las clases de nivel de escuela preparatoria otorgan créditos y pueden usarse para obtener un diploma a través de las Escuelas Públicas de Everett. Los estudiantes matriculados en Port Gardner son estudiantes de escuelas públicas en un programa de escuela pública alternativa. Para obtener más información sobre el programa y la inscripción, visite: [Port Gardner Parent Partnership](#) o llame al 425-385-5150



Semana de los profesionales de soporte a la educación



La semana de 14-18 de marzo nos ayuda a reconocer la importancia del trabajo que realiza el personal de soporte a la educación para las escuelas y sus estudiantes todos los días. Los exhortamos a que se den un momento para agradecer al personal de la oficina, a los guardias de cruces escolares, a los paraeducadores, personal de mantenimiento, profesionales de servicios de alimentos y nutrición, conductores de autobuses y muchos otros del personal de soporte que ayudan a que las escuelas y el distrito funcionen sin contratiempos.

El horario de verano inicia el 13 de marzo

El horario de verano (**Daylight Saving Time**) inicia el domingo 13 de marzo a las 2 a.m. Adelante su reloj una hora (vamos a perder una hora) el sábado por la noche. Tendremos más luz por las tardes. Este cambio se conoce también como “Spring Ahead”, “Summertime” y “Daylight Saving Time”.



Let's Connect (Conectémonos)



La sesión de Let's Connect este mes de marzo se enfocará en la participación de las familias y la comunidad. Próximamente más información sobre la fecha y cómo registrarse.

Actualice sus contactos de emergencia

Por favor llame a su escuela si su número de teléfono o información de contacto de emergencia ha cambiado o cambia durante el año escolar. Esta información de contacto es usada por las Escuelas Públicas de Everett en el sistema telefónico automatizado para emergencias y para compartir información importante de la escuela con las familias.



Parent University (Universidad para padres) – sugiera un tema



La Universidad para Padres es un recurso por demanda creado para ayudar a los padres y tutores legales a que participen de lleno en la educación de sus hijos. La participación de padres y familia en la educación afecta positivamente el éxito académico y social de los niños y niñas.

Nuestra meta es aumentar el nivel de colaboración e involucramiento entre las escuelas, las familias y la comunidad para educar, empoderar y conectar a las familias con recursos que formen la confianza de los padres y el estudiante, mejoren el desarrollo de carácter, y promuevan las habilidades para la vida con el fin de incrementar las probabilidades del éxito de las familias en sus metas y aspiraciones académicas.



El contenido incluye una selección de videos pregrabados y documentos de cómo hacer algo que pueden ser vistos en cualquier momento.

Si tiene algún tema adicional que le gustaría sugerir, por favor llene nuestro [formulario de "Sugiera un Tema"](#), que está también disponible en nuestra página web de Parent University en www.everettsd.org/ParentUniversity.

Apreciamos su trabajo en colaboración con nosotros para continuar mejorando este recurso para las familias.

¡Manténganse enterado!



Nuestra escuela usa Peachjar para enviar folletos electrónicos a casa.

Simplemente visite la página web de nuestra escuela y haga clic en el botón de Peachjar Eflyer para que lo revise. No necesita ingresar para recibir nuestros folletos electrónicos escolares.

No se requiere de ninguna acción de su parte. Usted ya debió haber recibido un email de bienvenida de Peachjar que incluye un nombre de usuario y contraseña, que son proporcionados para que pueda manejar su cuenta y preferencias de recibo de los folletos. No se apure si se le olvido su contraseña, la puede reiniciar en cualquier momento. Si no puede localizar su email de bienvenida, visite [Peachjar y regístrese!](#)

Este sistema es usado exclusivamente para la distribución de folletos aprobados por la escuela. Su email no será compartido o usado para otro fin.



3900 Broadway
Everett, WA 98201
425-385-4000
www.everettsd.org

Las escuelas públicas de Everett no discriminan en ninguno de sus programas o actividades por sexo, raza, credo, religión, color, país de origen, edad, estado veterano o militar, orientación sexual, expresión de género o identidad, discapacidad, o el uso de perros guía entrenados o animales de servicio, y provee con acceso equitativo a los Boy Scouts y a otros grupos juveniles designados. Los siguientes empleados han sido designados para gestionar las preguntas y quejas de presuntos actos de discriminación.

Title IX/Civil Rights Compliance Officer:

Kevin Allen
425-385-4100
KAllen@everettsd.org
PO Box 2098
Everett, WA 98213

Section 504 Coordinator:

Dave Peters
425-385-4063
DPeters@everettsd.org
PO Box 2098
Everett, WA 98213

ADA Coordinator:

Randi Seaberg
425-385-4104
RSeaberg@everettsd.org
PO Box 2098
Everett, WA 98213